

## READ CAREFULLY BEFORE INSTALLATION.

Wood is a natural product and deserves respect and attention at all times. Please ensure that these installation instructions are carefully followed, as failure to adhere to them will be the responsibility of the installer. This installation manual has been constructed after years of experience with the product and will ensure that you get the most from the system.

Your decking has undergone rigorous checks during manufacture, however, if a defect has been missed by our quality control, do not install, and contact your supplier for advice.

## 1. TYPES OF SURFACE AFFECTED

**A.** Any hard surface such as cement slab or concrete slope with a slope of 1.5 to 3 cm per linear meter. The surface must meet the usual requirements for laying battens as: flatness (slope allowing suitable drainage and flow of water), surface resistance, free of cracks and cleanliness.

**B.** Where ground is to serve as the base, it is recommended that support is created by concrete blocks by compacting gravel naturally self-levelled adequate thickness screed self-draining, durable wood; hiding of these materials by a film-type geotextile. The space between the earth and the planks must always be at least 8 to 10 cm. The good performance of these materials must be checked before installation.

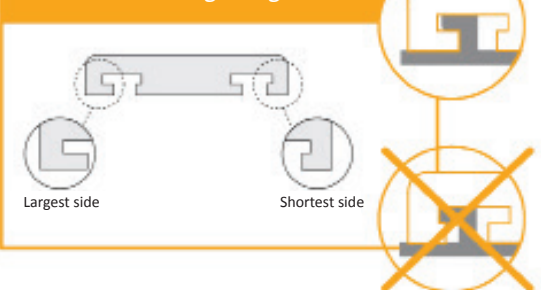
## 2. INSTALLATION

The example below shows a sub-deck using a geotextile membrane in conjunction with an adjustable pedestal system.

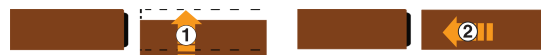
This made possible using *Softline*<sup>®</sup> wedges or polypropylene adjustable pedestals—different types of which can be supplied to suit the required height adjustment.

- Before commencement of installation, check the line of the walls to determine the direction of installation and the tolerances to provide for the first axis. If the wall is straight, the 1st axis will be 410 mm (400 mm + 10 mm clearance between the planks and the wall) from the wall, then all axes of 400 mm. Where the wall would curve, measure the depth of the curve and deduct 410 mm. A batten will then be placed closest to the wall to serve as a support.
- Mark out your lines on the ground with a wire dipped in chalk. The axes are 400 mm in the width wise (battens to battens) and the lengthwise (on the same batten).
- Lay the pedestals at each crossing and stick on insulation sealed using a compatible external glue.
- Set all the pedestals at level end - 54 mm (total height of the entire *Softline*<sup>®</sup> system) using a spirit level or laser.
- Lay the Padauk battens (flat) 30 x 60 mm on the levelled pedestals at length by length, the fall of the end-cut batten is reused for the second start and so on (each end of batten should be shifted by at least one axis relative to the previous junction of 2 battens must be on a pedestal). Pre-drilling of battens and fixing adjustable pedestals using stainless steel screws A2 5 x 40 mm.
- Draw a line for fixing the first row of deck board. Fixing *Softline*<sup>®</sup> clips following the line using stainless steel screws A2 4 x 25 mm. (1 clip by batten = +/- 25 clips/sqm).
- The installation will be made «English» style (applying a minimum offset of axis, 400 mm from one end of plank to another).

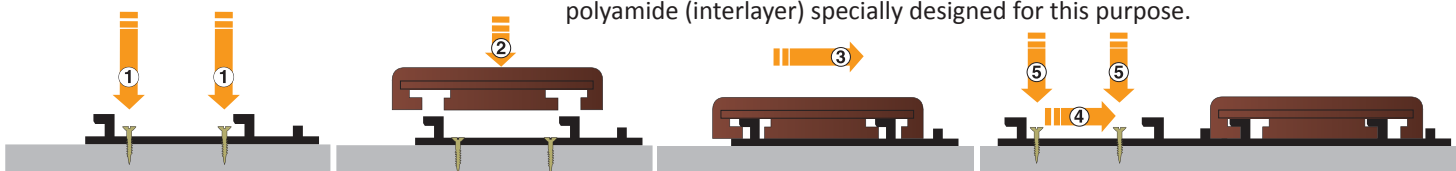
**Warning:** The *Softline*<sup>®</sup> outdoor decking system has to be installed in a direction. Fix the clip on the larger side of the board to be sure that both parts will hold tight together.



- Fit the planks in the clips, the wide side of the planks entering the clip (see diagram below), assemble the planks end in one another through special tongue already placed. The space of 6.5 mm between the planks will automatically be respected by the spacers, this space is intended to guarantee a good ventilation of the decking. The following plank must be placed completely into the clip in order to be insert longitudinally in the head of the plank (see drawing).



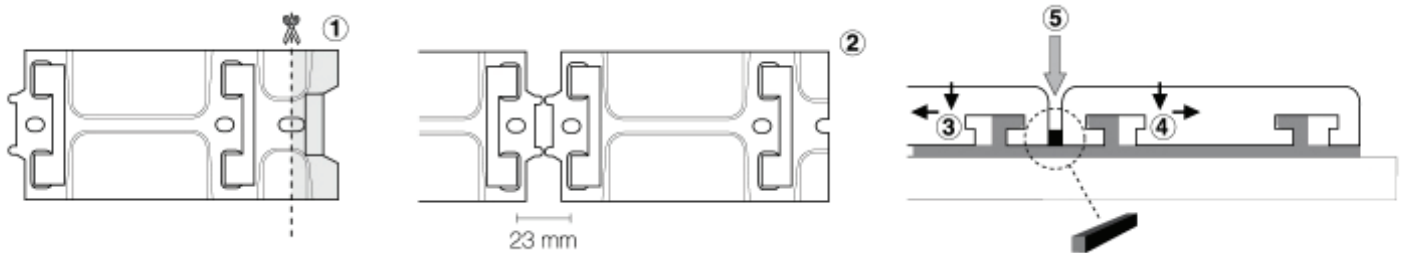
- The gluing of planks in the beginning and the end of each line is recommended on the clips to prevent sliding in length.
- Installation of baseboard and/or belt, by fixing *Softline*<sup>®</sup> clips set, themselves screwed into the support battens or concrete, cutting the 45° angle in the end, fitting in angle for the other sections, the edge of a joint angle will be slightly rounded. Installation of a belt to hide the height of the battens, by fixing *Softline*<sup>®</sup> clips. The plank spacing is regular and guaranteed by the insertion of a 20 x 6 x 7 mm polyamide (interlayer) specially designed for this purpose.



A complete video exists you can download it on [www.vetedy.com/softline\\_pose.zip](http://www.vetedy.com/softline_pose.zip)

### 3. SPECIAL FINISH

#### A. Finish



1. Cut the polyamide piece.

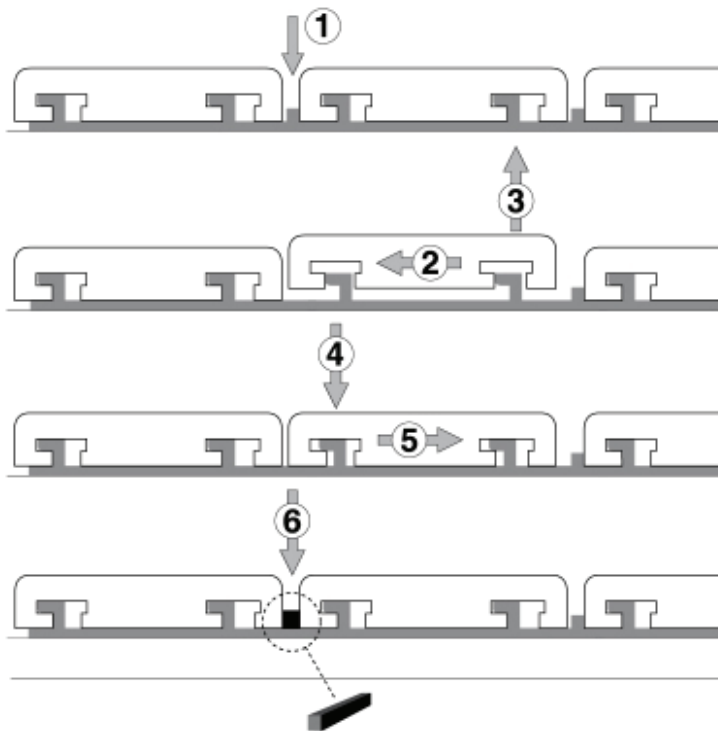
2. Fix the clip to 23mm space between the 2 lugs.

3. Set the next to last plank.

4. Install the last board by reversing it.

5. Insert and glue the spacers between the 2 planks.

#### B. Removal plank



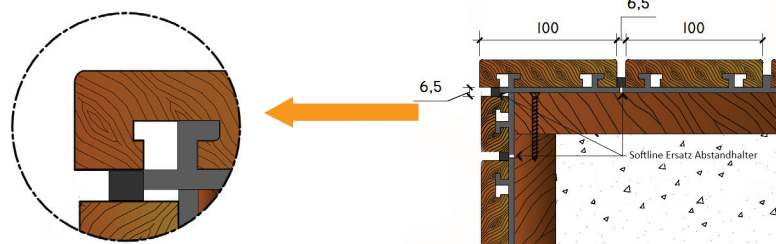
1. Cut the spacer with a circular saw + guide set at the depth of the pin.

2. et 3. Slide the plank to the left to uncouple and remove.

4. et 5. Put again the plank front and slide right.

6. Insert the spacer between the two planks.

C. The installation of a vertical belt can also be done with the help of *Softline*<sup>®</sup> clips, and with the *Softline*<sup>®</sup> spacers of 6x5mm. See scheme above :



### 4. TREATMENT

Treatment is not necessary and is left to the discretion of the client (in case of treatment, check the enclosed instruction). A wood cleaner for outdoor wood can be applied each year in early season to find the wood in its natural colour without gray (in case of sobering see manufacturer's instructions).

In case of problem, do not hesitate to contact your retailer.

We disclaim any liability for failure to comply with those instructions.